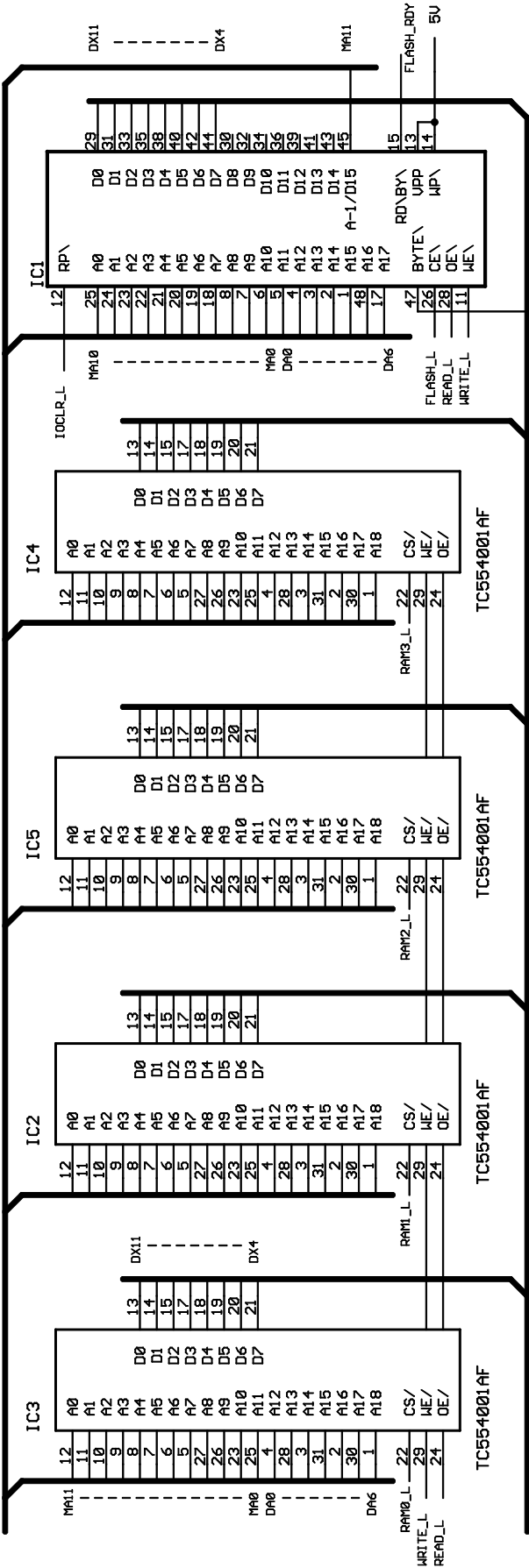
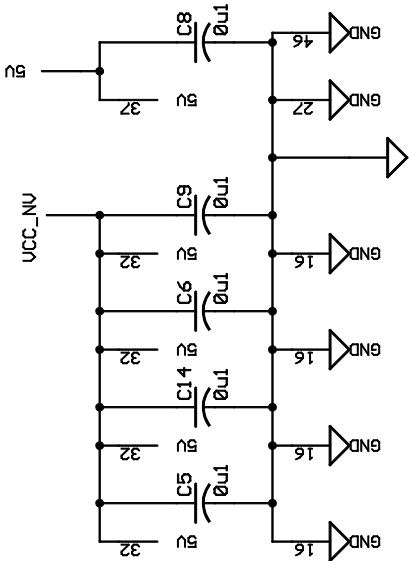


NU RAM & Flash ROM

MA[0..11],EMA[0..2],DA[0..7]

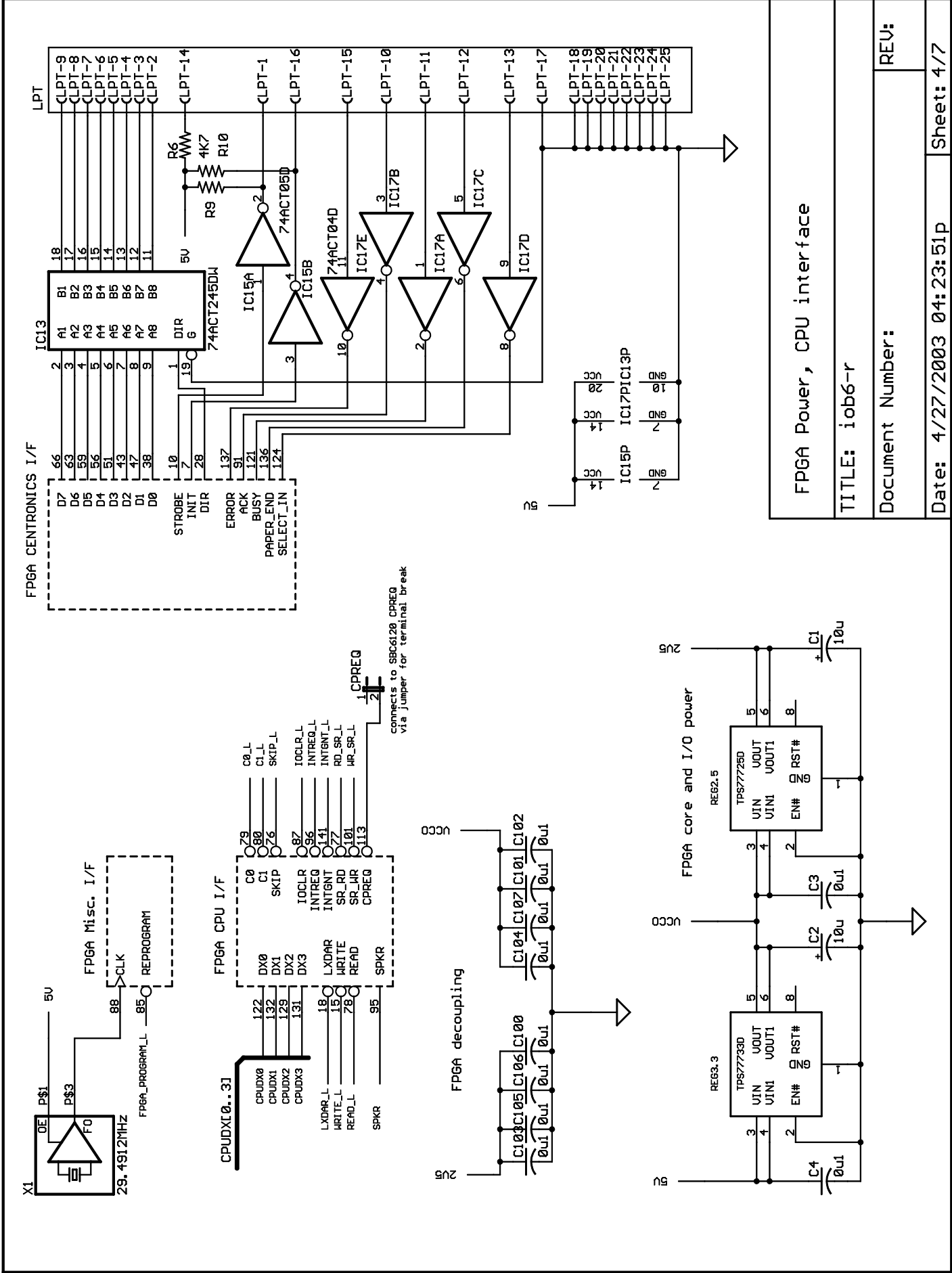


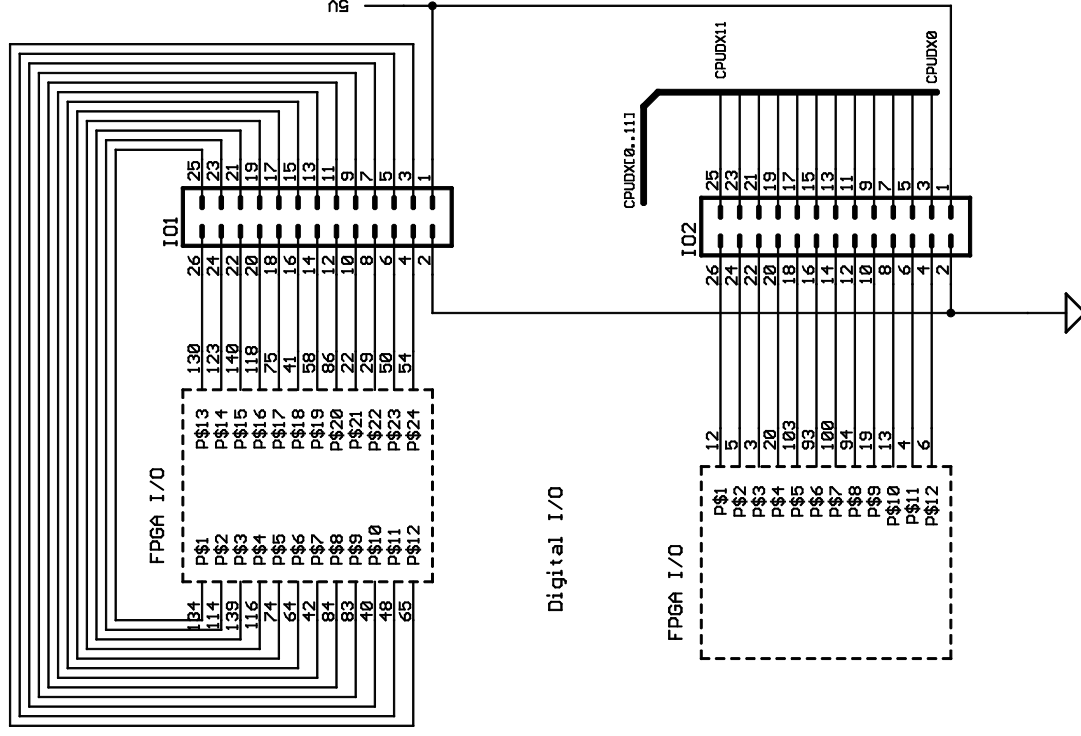
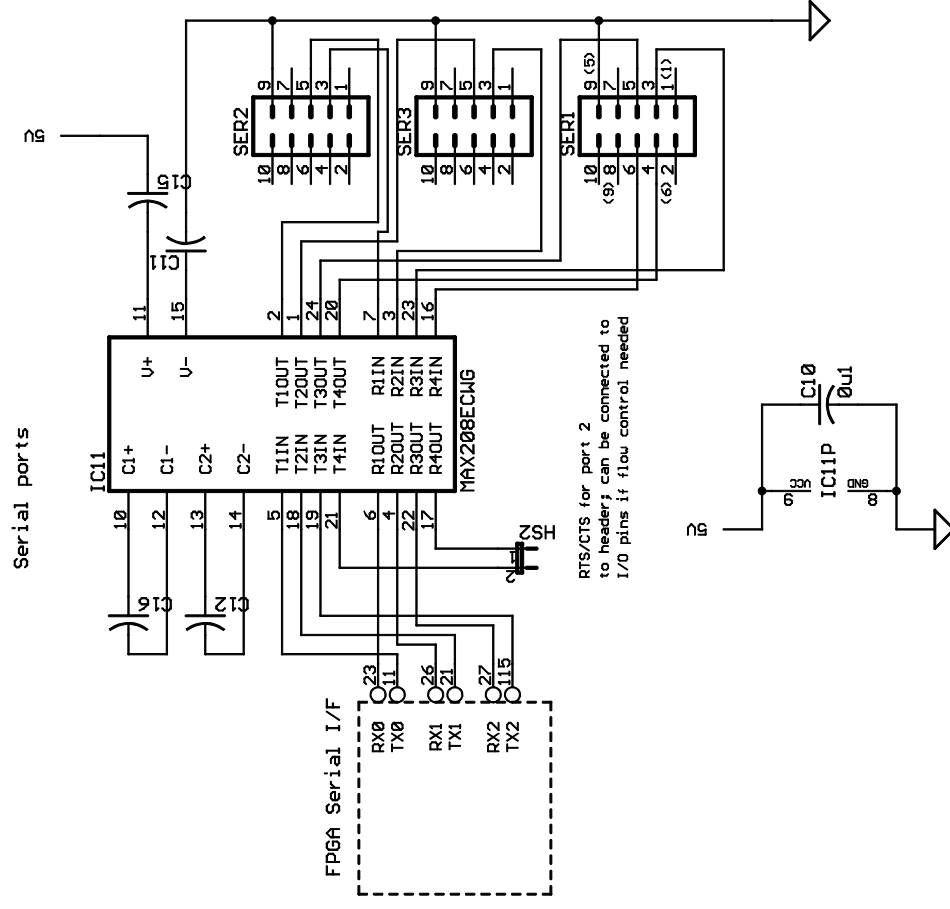
DX[4..11]



Memory	
TITLE: iob6-r	
Document Number:	
REV:	
Date: 4/27/2003 04:23:51p	Sheet: 2/7







Serial ports, programmable I/O

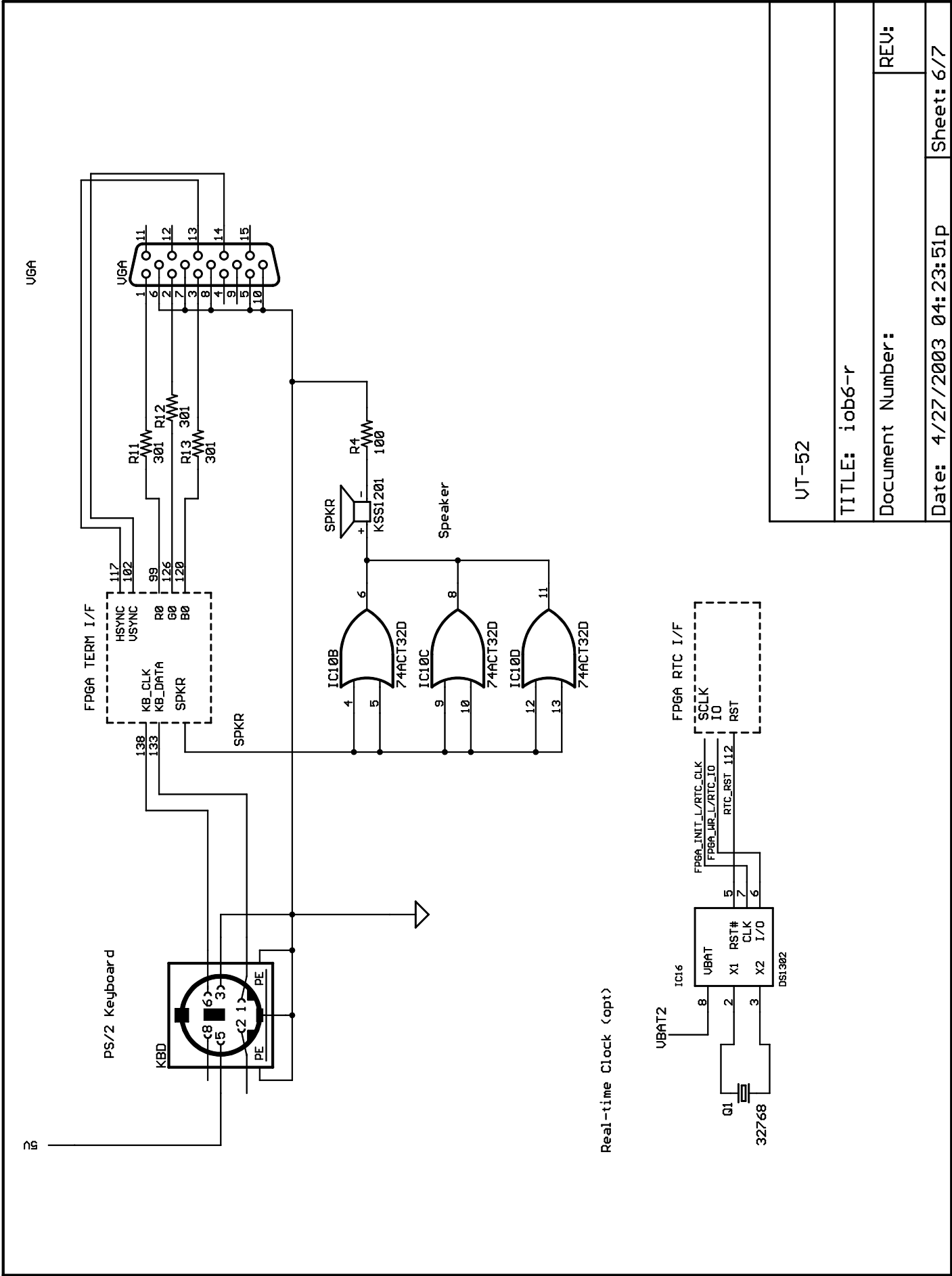
TITLE: iob6-r

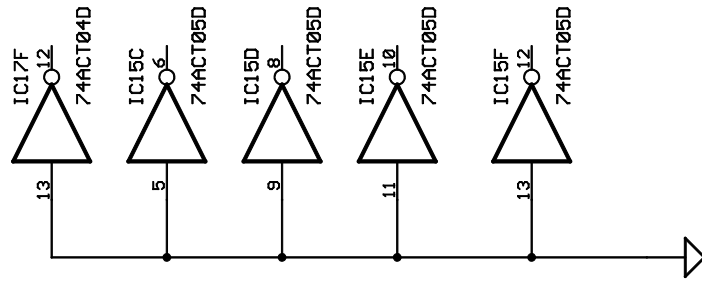
Document Number:

REV:

Date: 4/27/2003 04:23:51p

Sheet: 5/7





TITLE: iob6-r

Document Number:

REV:

Date: 4/27/2003 04:23:51p

Sheet: 7/7